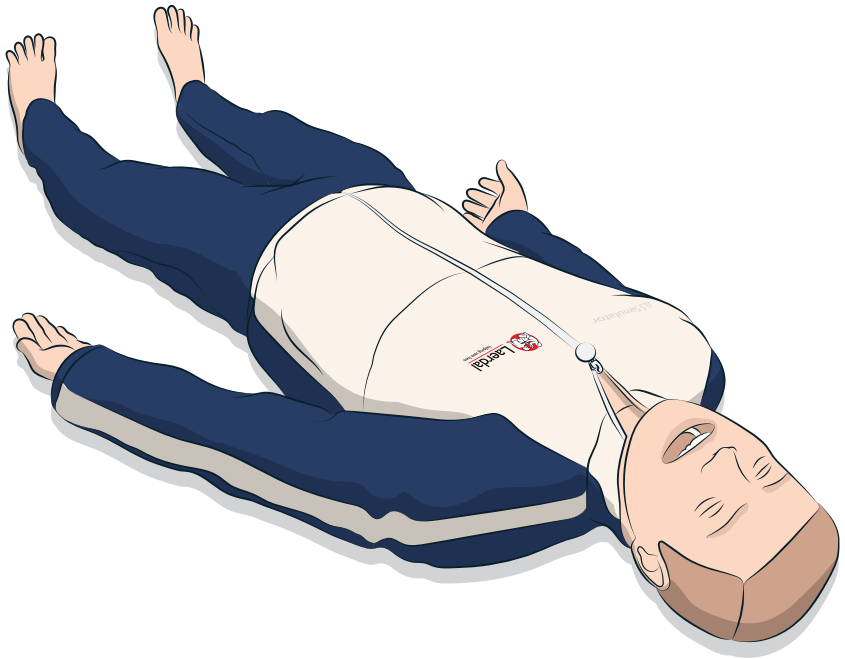


ALS Simulator

Quick Setup Guide



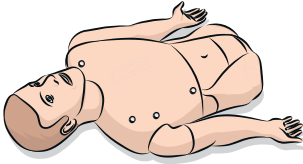
This Quick Setup Guide describes how to assemble and setup your ALS Simulator patient simulator. For information about how to use ALS Simulator, please refer to LLEAP help files and ALS Simulator Directions for Use.

Visit www.laerdal.com/downloads to download the latest Directions for Use and software.

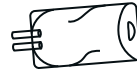


INCLUDED COMPONENTS

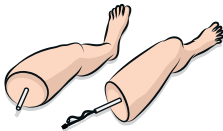
Simulator torso



I.O. bag



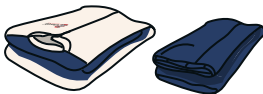
Simulator legs



BP cuff



ALS Simulator Tracksuit



Cricoid tape



Manuals & Warranty



6 x neckskins



Hardware Set



Thoracentesis Pad
x 6



Bladder kit



Right Thigh Hardware



Eye set



Lubricant



Air Pump



Chestrise Bladder



Blood concentrate



REQUIRED

Instructor PC



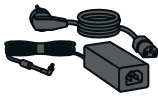
or
SimPad



Link Box



Power adaptor



Ethernet cable for PC



RECOMMENDED

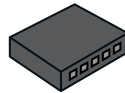
Patient Monitor



Headset



Ethernet switch



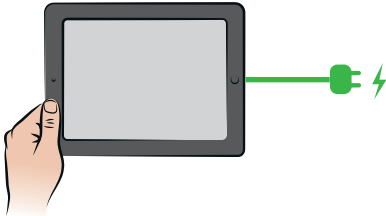
SpO2 probe



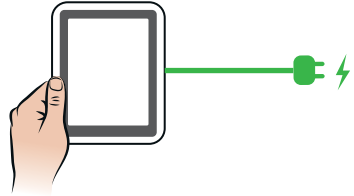
Ethernet cable for
Patient Monitor



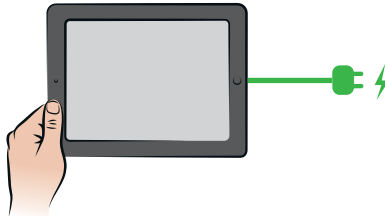
Instructor PC



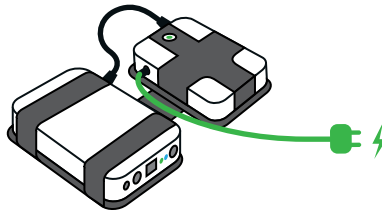
SimPad



Patient Monitor

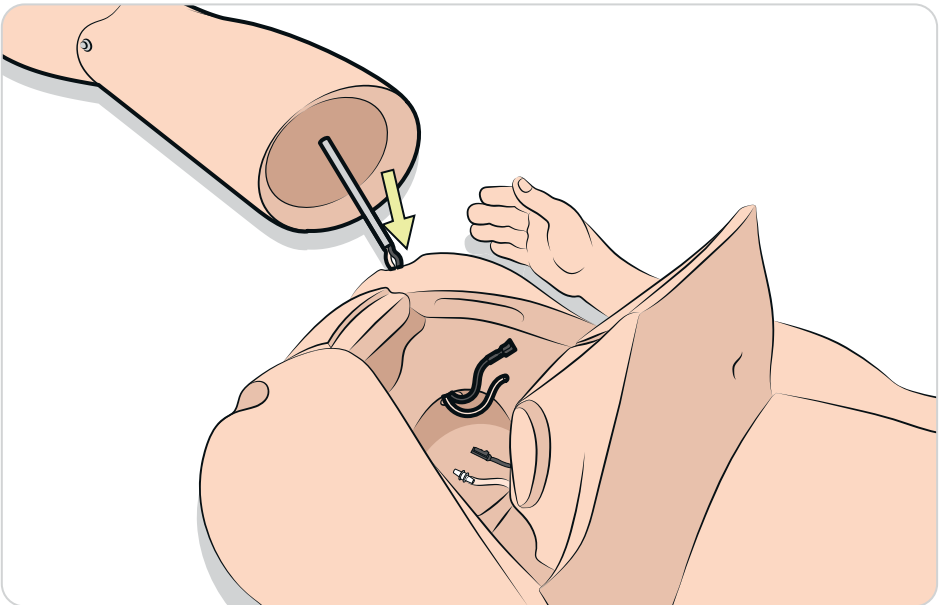
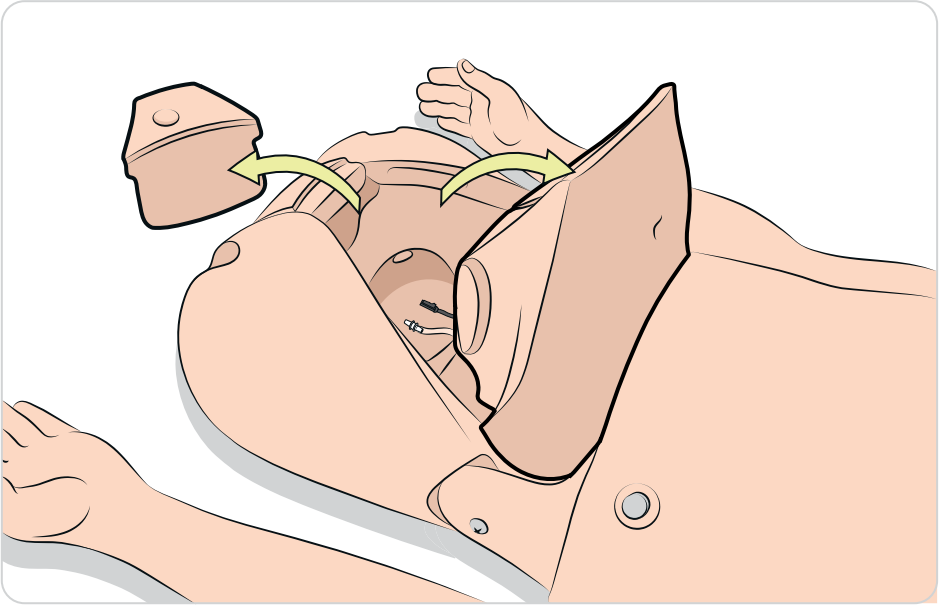


Link Box



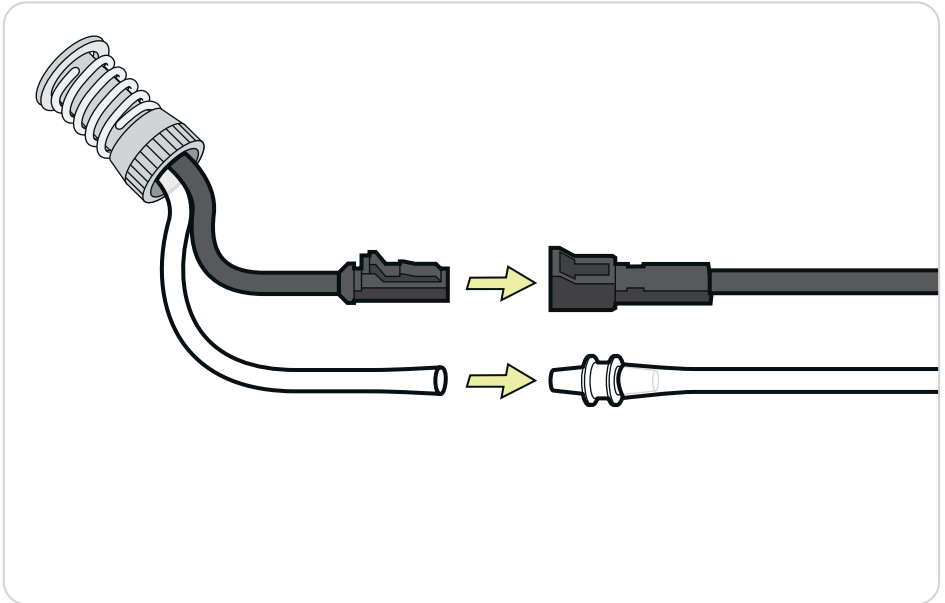
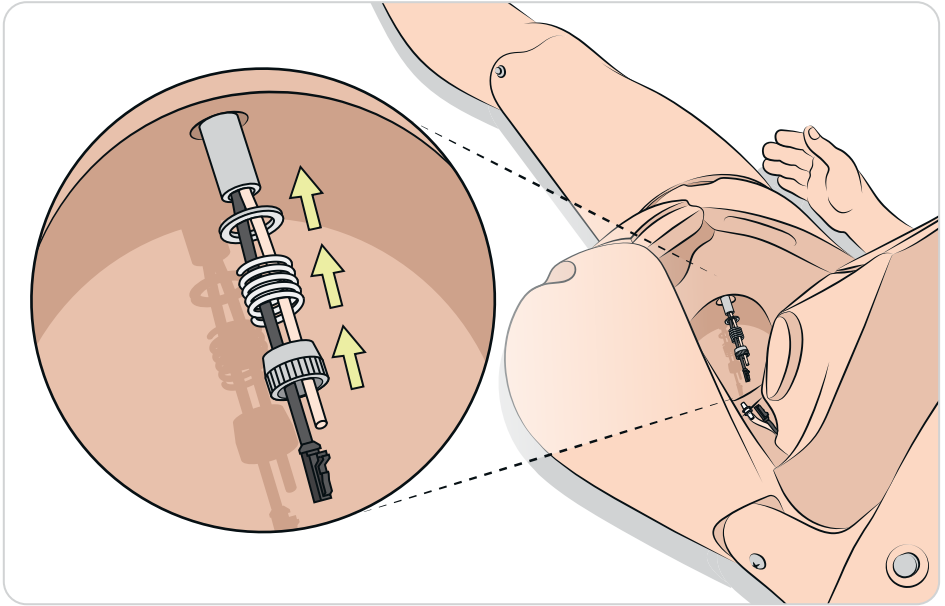
2

ATTACH RIGHT LEG



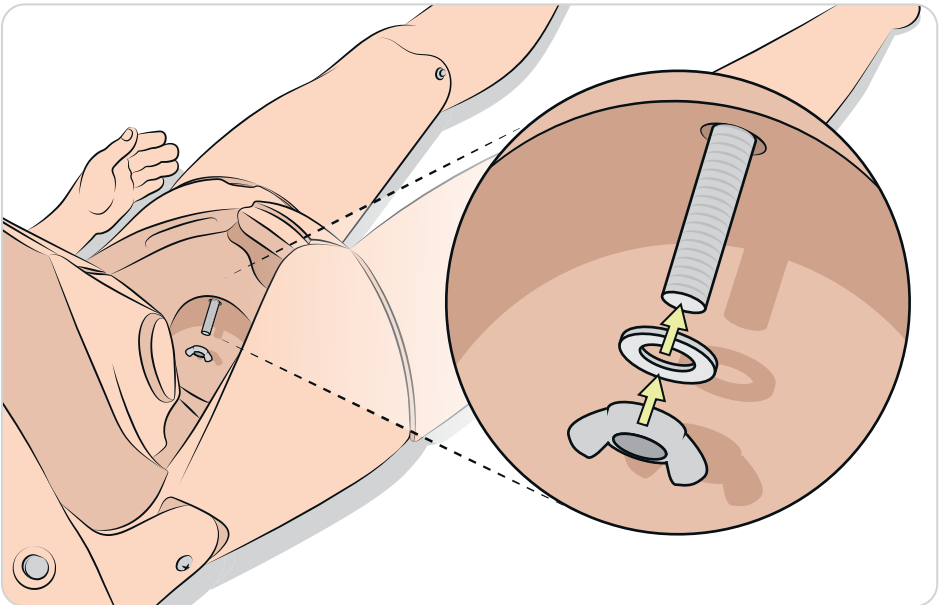
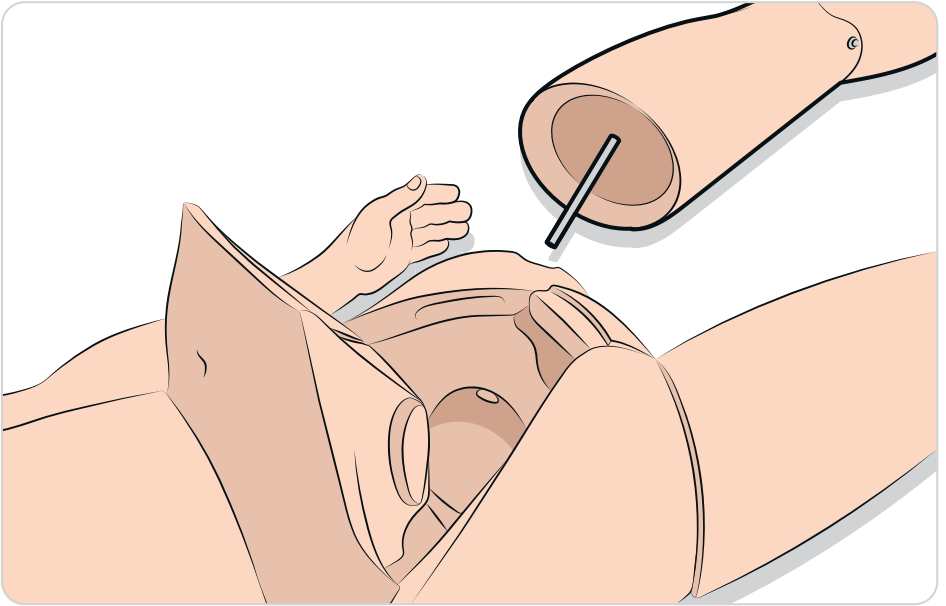
2

ATTACH RIGHT LEG



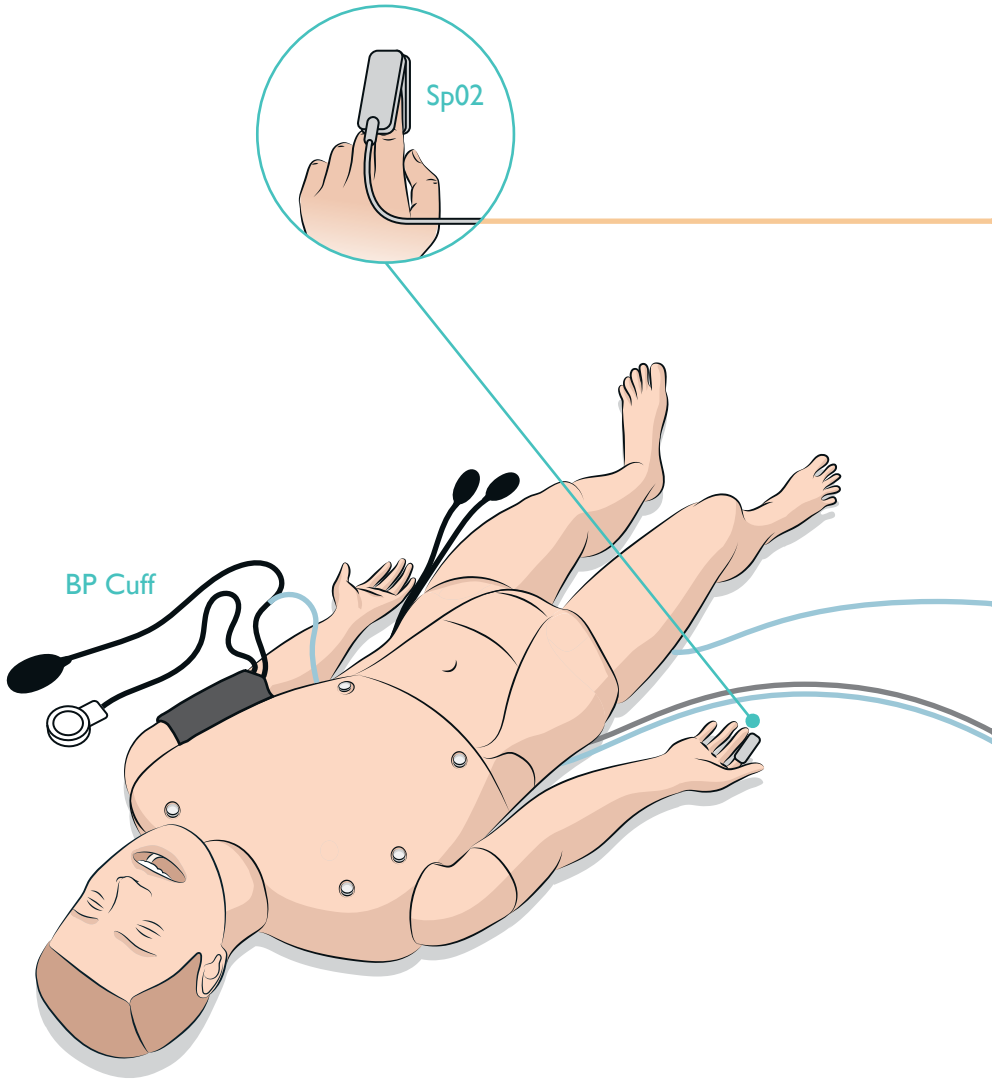
3

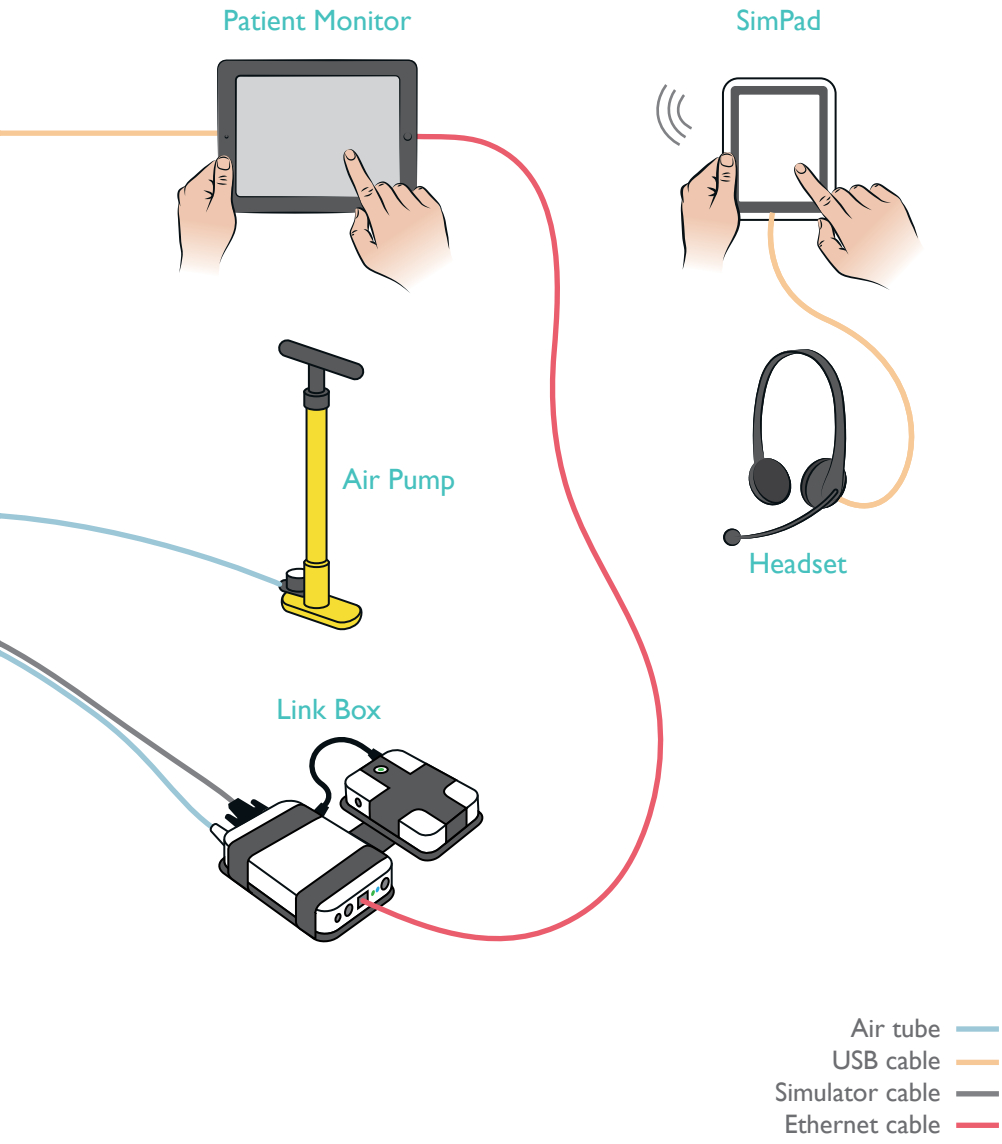
ATTACH LEFT LEG

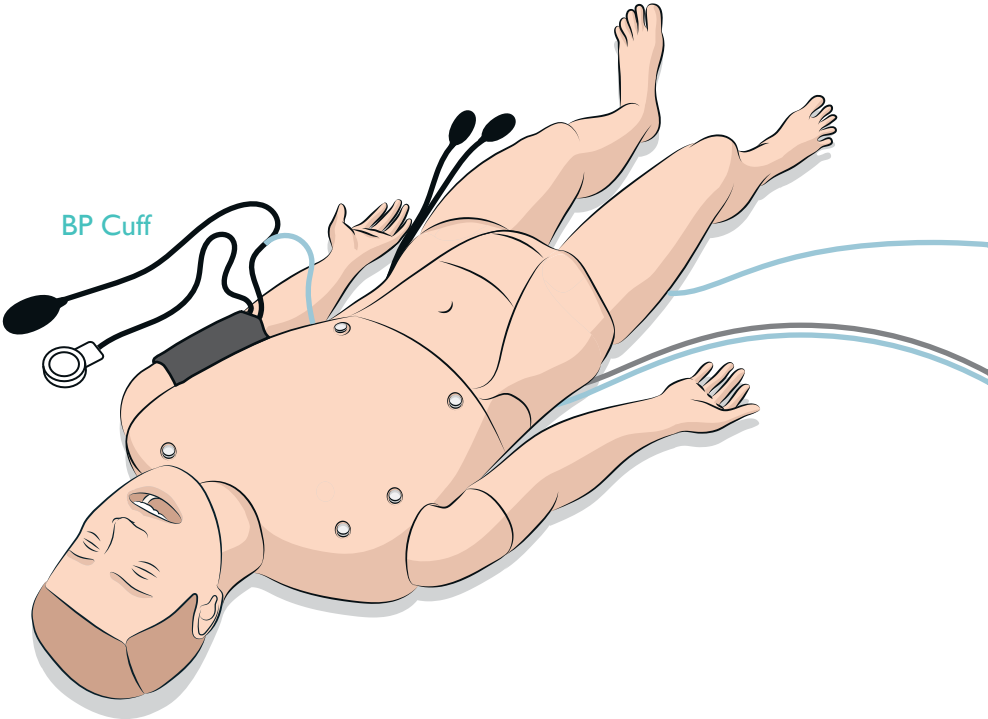


4A

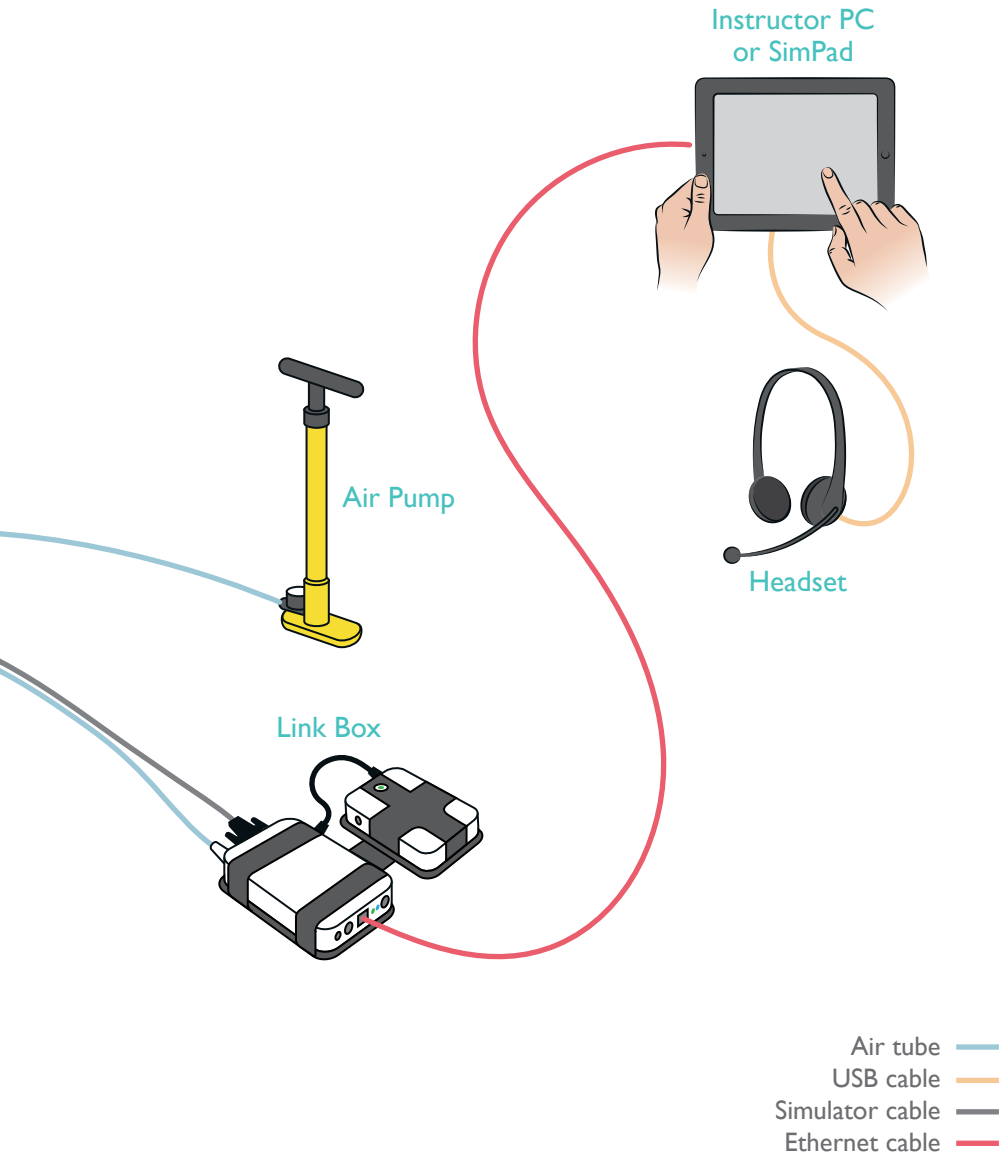
SIMPAD WIRELESS SETUP





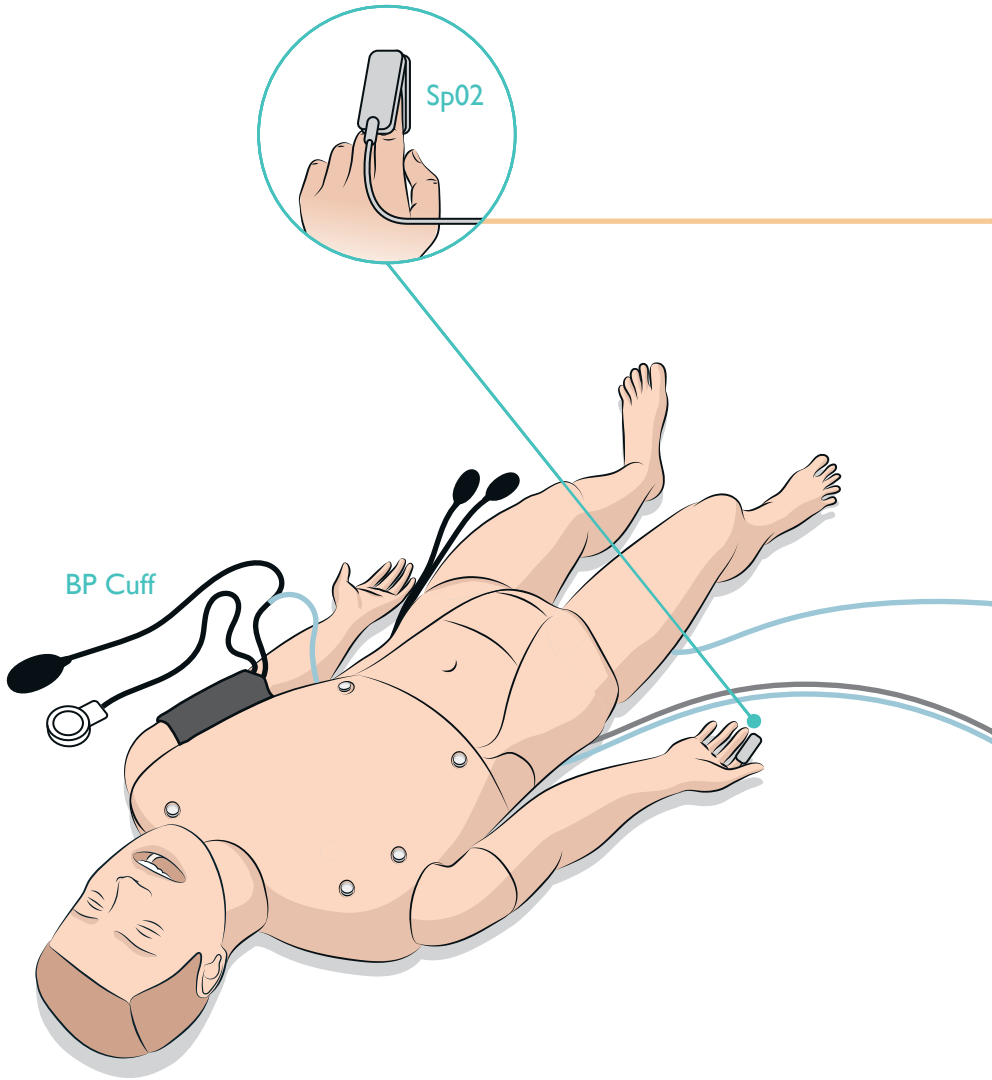


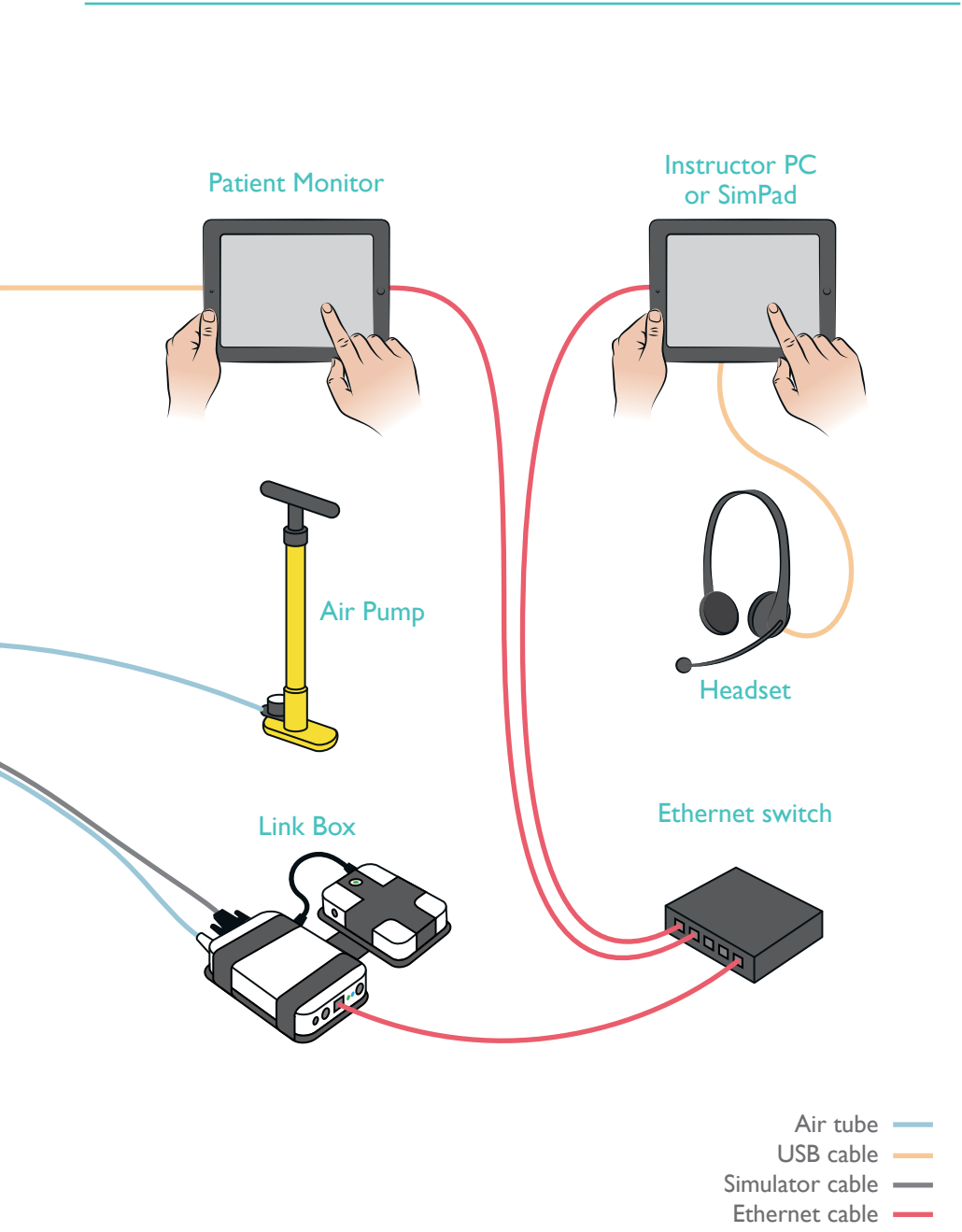
BP Cuff



4c

WIRED SETUP WITH PATIENT MONITOR





© 2014 Laerdal Medical AS. All rights reserved.
Device Manufacturer: Laerdal Medical , P.O. Box 38,
226 FM 116, Gatesville, Texas 76528 USA

Rev A



www.laerdal.com



Laerdal
helping save lives